

Large Easy Flooding Area in Tainan

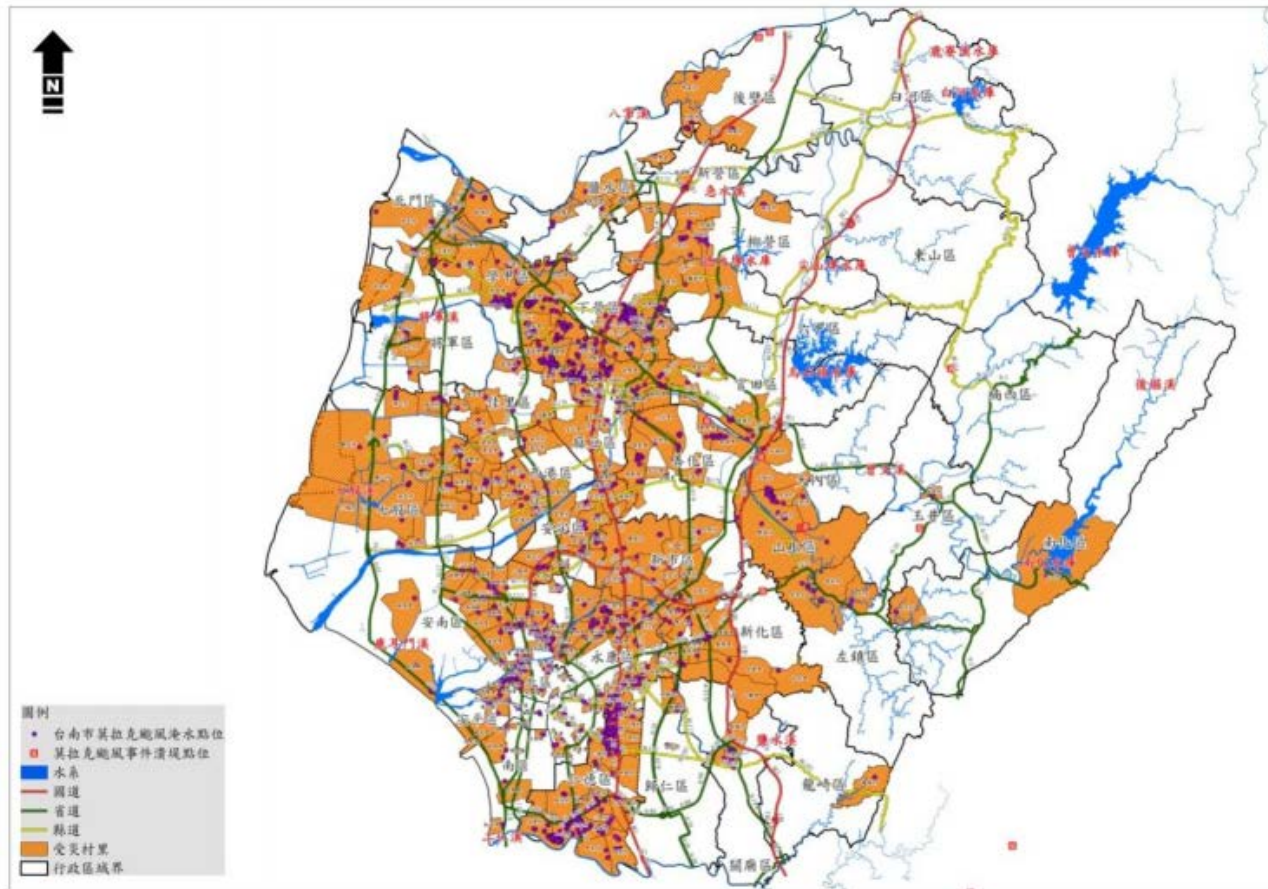


圖 1-7 臺南市莫拉克颱風淹水村里位置圖(資料來源:成大防災中心)

- 612 sq km of easy flooding area in Taiwan
- Tainan has 118.09 sq km, 19.46% of whole Taiwan
- Highest percentage among all cities in Taiwan

Operation Scenarios

Operation scenario	Scenario description
1	4G real time information retrival from remote stations
2	All stations connectivity status check
3	Real time video streaming from remote stations
4	Real time video streaming from wearable
5	Central/backup command stations connectivity back up testing
6	Image recognition testing for water level automatic recognition
7	Water level automatic recognition and automatic alter mechanism
8	Next generation wearables- GPS, voice recording and etc.
9	Remote activation of pumps in pumping station
10	Central/multiple backup command stations connectivity back up testing

